

## **NEW OPERATOR PANEL TOUCHSTAR 10**



Dear Customer,

Gea Procomac informs you that we are available to supply a new operator panel *Touchstar 10* that could be installed on the Procomac machine/s you have as upgrade making the man/machine interface more intuitive and quicker and to allow the layout of some functions that cannot be integrated on the panel operator series previously supplied (Top 80 and Topgraphic).

The *Touchstar 10* is an operator panel 10-inch touchscreen in color developed by Gea Procomac and aimed at optimizing the application-oriented software in the machine automation of its product range.

The *Touchstar 10* is equipped basically with an Ethernet connection that can be used for the interface with the LAN to collect the data recorded by the panel on the SQL 3.1 database.

The *Touchstar 10* has also two USB doors that can be used for the application-oriented software download in a simple and quick way (Backup and Restore by USB pendrive), facilitating then the panel replacement in case of any fault.

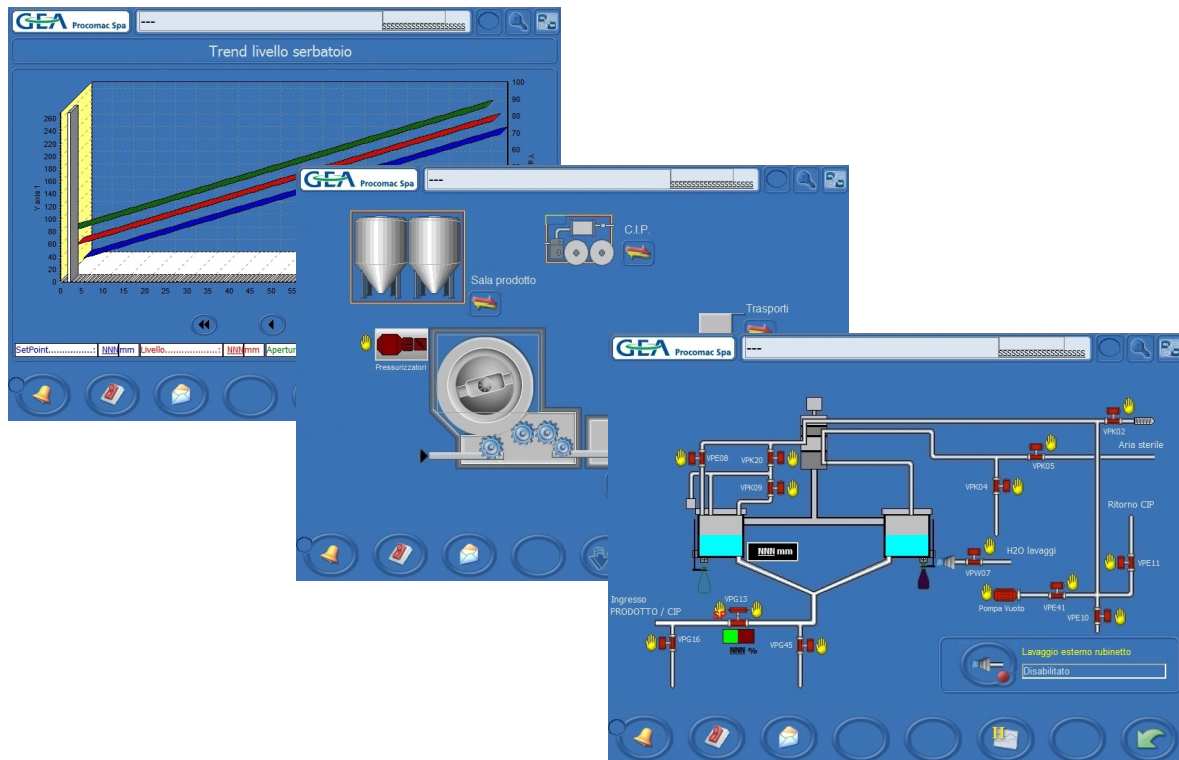
## Advantages of the new panel TOUCHSTAR 10

The *Touchstar 10* wide display allows a remarkable expansion of the synoptic charts and of the functional diagrams compared with the previous panels, since we can insert more particulars in the same page with a consequent reading immediateness of the plant condition.

The immediate learning of the plant condition facilitates the operator intervention in case of any alarm or fault, reducing the machine stop time.

The touchscreen typical functionality makes easier and quicker all the manual intervention operations and the machine setup by the operator, reducing contextually the mistake possibility with the data insertion.

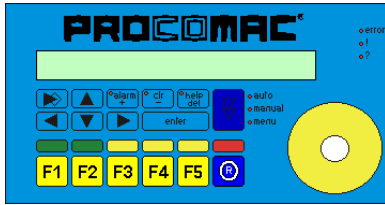
The *Touchstar 10* can manage up to a 11 Password levels



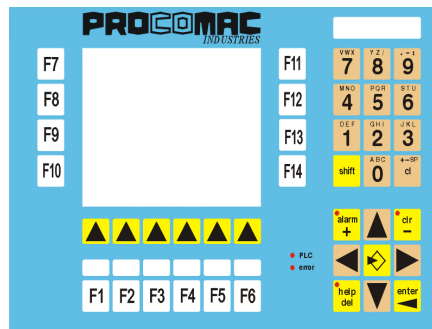
The *Touchstar 10* alarms visualization is clear and more complete in comparison with the previous panels. The alarm record effected automatically on the roomy *Touchstar 10* database gives an alarm file that can be consulted to identify any possible plant inefficiency.

The *Touchstar 10* upgrade avoid the problems deriving from the **future obsolescence** of the Topgraphic and of the Top80. For the old panels, that have been working by now for a long time, Gea Procomac will be able to assure the spare parts supply or the repair until when the necessary electronic components are available on the market.

*The evolution of the operator panel PROCOMAC*



*Year 1993*



*Year 1997*

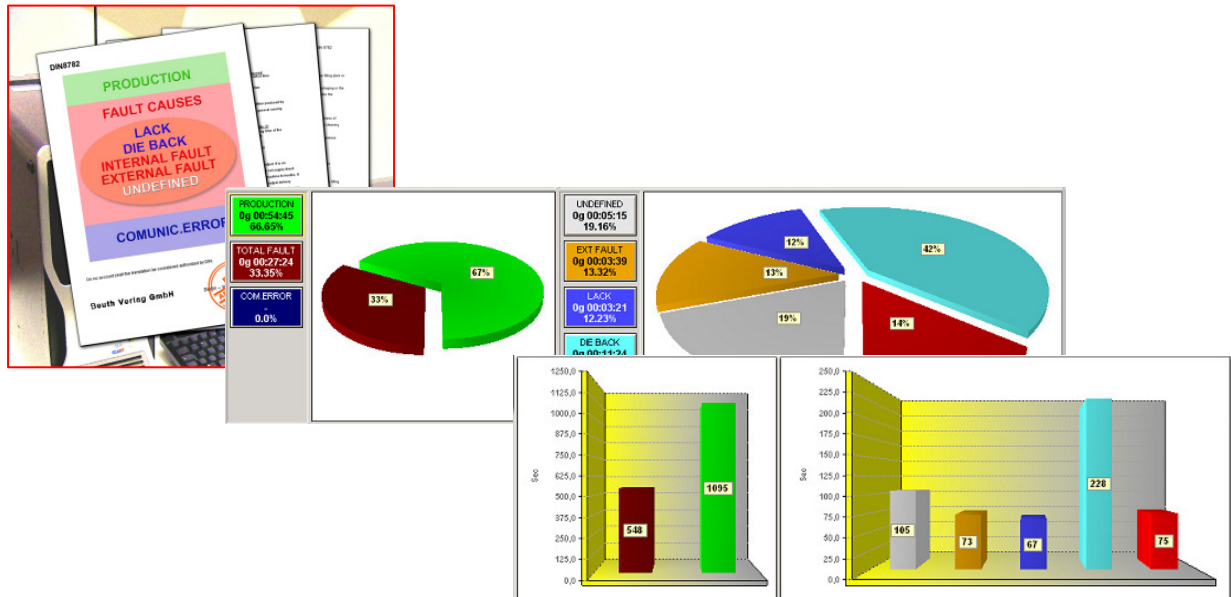
*And now finally.....Touchstar 10*



## Functions and optional available

### Optional A

Layout charts with statistics, alarms and calculation of the machine efficiency as per the regulations **DIN 8782** (reference specification for the performance evaluation in the bottling lines).



### Optional B

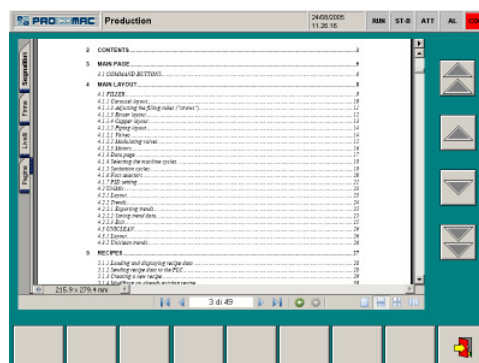
System layout for the product traceability, you can also upload the data collected by the panel SQL 3.1 database by the LAN (Ethernet connection).

### Optional C

Modem supply and remote assistance activation.

### Optional D

Integration in the panel of the pdf documents (machines manuals, technical specifications, change over cards, etc...), you can visualize the desired details by the specific key.



### ***Touchstar 10 technical features***

*Display*..... 10,4'' TFT colour LCD SVGA  
*Resolution*..... 800 x 600  
*Colours*..... 18 bit  
*Backlight*..... 50.000 h  
*Touchscreen*..... 5 wire resistive  
*Processor*..... LX800 – 500Mhz  
*Operative system*..... Windows CE 6.0  
*Flash disk*..... 1 Gbyte  
*Ram*..... 256 MByte  
*Ethernet* ..... Yes  
*Usb*..... Yes (2)  
*RS232*..... Yes  
*Modem*..... Optional  
*Protection degree*..... IP65  
*External dimensions*..... 280x250x52 mm  
*Piercing template1*..... 260x230 mm  
*Exercise temperature*..... 0°C / 50°C



### ***Where the upgrade can be applied***

The *Touchstar 10* can be installed in place of the Topgraphic or Top80 panels if connected to the Plc Siemens S7 or Plc Allen Bradley SLC500.

For any other panel or plc types the technical/sales evaluation will be effected if required.

### ***Terms of supply***

As far as the terms of supply are concerned, please refer to our Upgrades dept who will prepare the best technical/sales proposal for the replacement of the Top80 and Topgraphic panels with the new *Touchstar 10* on the Gea Procomac Spa plants you have.

GEA Procomac S.p.A.  
Via Fedolfi 29  
43038 Sala Baganza (PR) Italy  
Tel + 39 0521 839411  
Fax +39 0521 839572  
[ESP.procomac.it@geagroup.com](mailto:ESP.procomac.it@geagroup.com)  
[www.procomac.it](http://www.procomac.it)